



SOLVE  TM

INDUSTRIAL MOTION GROUP

**CASE STUDY:
QCW CAR WASH BEARINGS**

**PROVEN PERFORMANCE IN THE
HARSHEST ENVIRONMENTS**

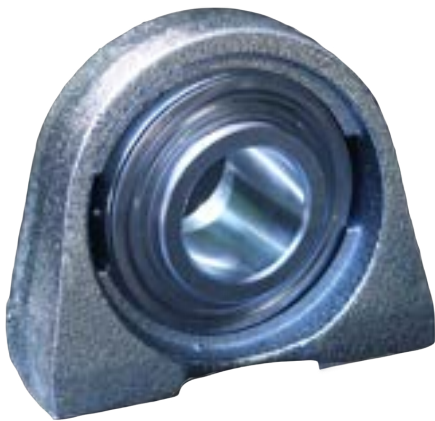
Car washes present one of the most punishing environments for mounted bearings. Constant exposure to high-pressure water, cleaning chemicals, grit, and rapid stop-start cycles often leads to frequent bearing failures. Traditional car wash bearings typically last only about three months before requiring replacement. On top of that, they demand routine re-greasing, adding downtime and maintenance costs.

Challenge

In a test-site car wash application, operators needed a solution that would reduce maintenance and extend bearing life.

The key requirements included:

- Reducing the high maintenance burden
- Extending the service life of bearings
- Improving bearing reliability
- Eliminating the need for re-greasing
- Withstanding the extreme environment of continuous wash cycles



Solution

Solve Industrial Motion Group introduced the **QCW Car Wash Bearing**, originally developed under the IPTCI brand, for field testing. In September 2024, these bearings were installed at a high-volume car wash test site.

Results

Since installation, the **QCW Car Wash Bearings** have washed over **250,000 vehicles**—and they're still running.

- **Zero Maintenance:** No re-greasing or service has been required. Improving bearing reliability
- **Extended Life:** Far surpasses the industry norm of just three months.
- **Proven Reliability:** Maintained continuous uptime in one of the harshest wash-down environments.

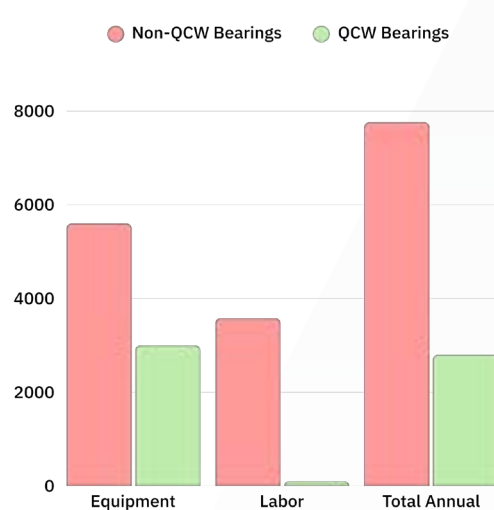
Conclusion

The QCW Car Wash Bearing from Solve is redefining performance standards in car wash operations. Where conventional bearings fail quickly and demand constant upkeep, the QCW delivers exceptional longevity and true maintenance-free operation. For operators, this translates to less downtime, lower costs, and peace of mind that their equipment will keep running smoothly.

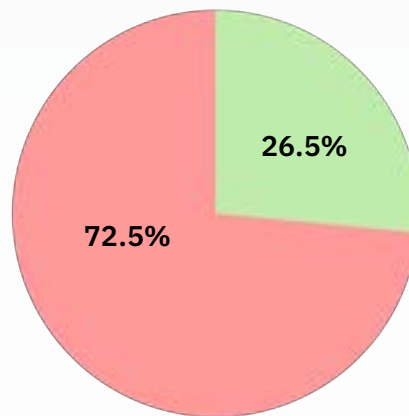
Key Takeaway

- Over 250,000 car washes completed with QCW Bearings still in operation
- Zero maintenance required throughout performance
- Standard car wash bearings typically last only three months
- QCW delivers unmatched durability and reliability compared to alternatives

Cost Analysis



Annual Cost Comparison
QCW Bearings (63.9% Savings)



Downtime
Each red day represents
\$10,000 lost

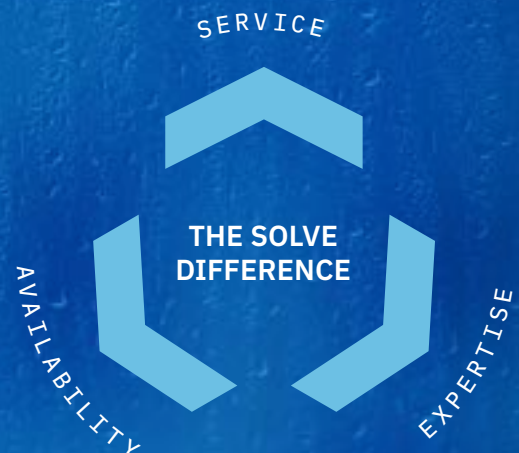
MON	TUE	WED	THU	FRI	SAT	SUN
					1	2
3	4	5	6	7	8	9
10	11	12	13	14	15	16
17	18	19	20	21	22	23
24	25	26	27	28	29	30
31						

totaling \$70,000
per year per location

Solutions by Solve

Solve Industrial Motion Group delivers a full portfolio of bearings, power transmission components, and engineered solutions built to perform in the most demanding Car Wash and corrosive environments. Our trusted solutions help operators maximize uptime, extend equipment life, and reduce maintenance under extreme conditions.

You can trust Solutions by Solve.



Your Source for Power Transmission Components



Mounted Ball Bearings



**Corrosion-Resistant
Mounted Ball Bearings**



Split Block Roller Bearings



**Unitized Mounted
Roller Bearings**



**Spherical & Cylindrical
Roller Bearings**



Tapered Roller Bearings



**Deep Groove & Angular
Contact Bearings**



Needle Roller Bearings



**Cam Followers &
Yoke Rollers**



**Spherical Plain Bearings
& Rod Ends**



Sheaves



Timing Pulleys



**QD, DST & Tapered
Shaft Bushings**



Weld-On Hubs



MD Flex Couplings



Jaw Couplings



Sprockets



Precision Roller Chains



**Corrosion-Resistant
Roller Chain**



V-Belts & Timing Belts

Solve Industrial Motion Group is an industry-leading manufacturer and supplier of industrial-grade bearings and power transmission components.
24/7 Sales: 704-588-1091 Toll-Free: 800-763-4434
sales@solveindustrial.com

©2025 SOLVE IMG. All Rights Reserved.

